

FOR LEASE > OFFICE/INDUSTRIAL SPACE

# World Park @ Union Centre 4



9361-9367 ALLEN ROAD, WEST CHESTER, OH 45069



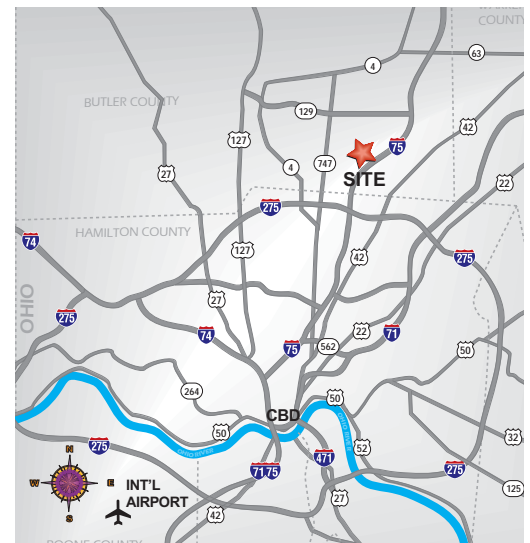
## Property Overview

- > 48,400 Total SF
- > 10,600 SF Available
- > 16' Ceiling Heights
- > Docks Available
- > Drive-Ins Available
- > Fully Sprinklered
- > 110' Building Depth
- > 40' x 40' Column Spacing
- > +/- 150 Parking Spaces
- > Located in Unincorporated West Chester
- > Zero Earnings Tax

## Available Spaces

Suite	9363
Available SF	5,540 SF
Warehouse	997 SF
Office	4,543 SF
Docks	0
Drive-Ins	1

Suite	9361
Available SF	5,060 SF
Warehouse	0 SF
Office	5,060 SF
Docks	0
Drive-Ins	1

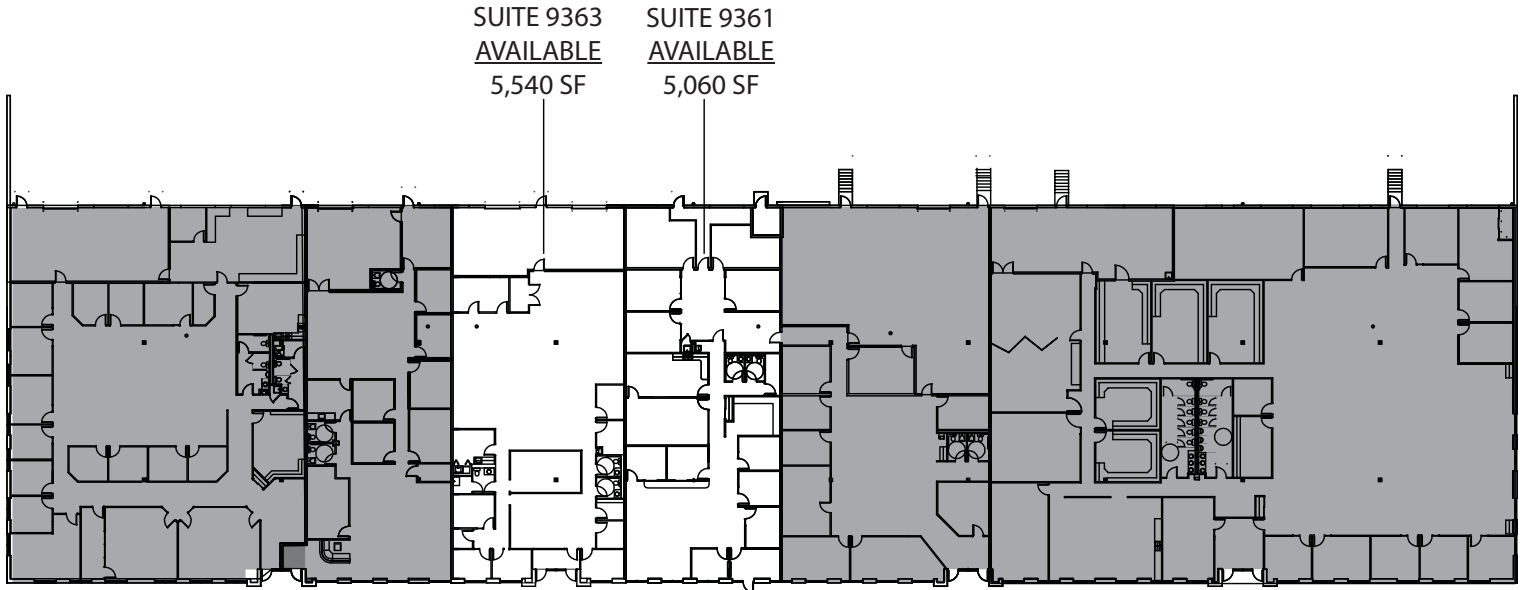


JOHN B. GARTNER III, SIOR  
513 562 2207  
CINCINNATI, OH  
john.gartner@colliers.com

ERIN M. CASEY GA-C, MICP  
513 562 2225  
CINCINNATI, OH  
erin.casey@colliers.com

COLLIERS INTERNATIONAL  
GREATER CINCINNATI  
425 Walnut Street, Suite 1200  
Cincinnati, OH 45202  
www.colliers.com

# World Park @ Union Centre 4 > Floor Plan



World Park @ Union Centre  
Building 4

AVAILABLE

LEASED



## Contact Us

JOHN B. GARTNER III, SIOR  
513 562 2207  
CINCINNATI, OH  
[john.gartner@colliers.com](mailto:john.gartner@colliers.com)

ERIN M. CASEY, GA-C, MICP  
513 562 2225  
CINCINNATI, OH  
[erin.casey@colliers.com](mailto:erin.casey@colliers.com)

COLLIERS INTERNATIONAL  
GREATER CINCINNATI  
425 Walnut Street, Suite 1200  
Cincinnati, OH 45202  
[www.colliers.com](http://www.colliers.com)

The information contained herein has been obtained from sources we deem reliable. We have no reason to doubt its accuracy, but we do not guarantee it. A Copyright by Colliers International 2013. This flier may be reproduced only in its entirety, without modification or deletion.

