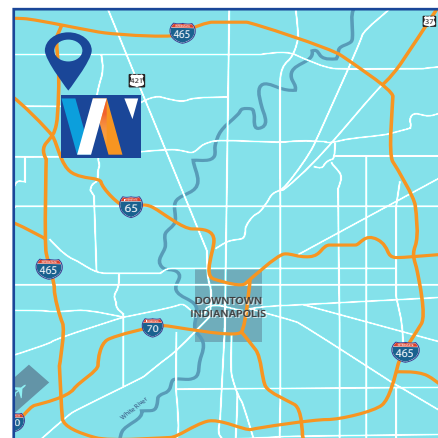




BUILDING HIGHLIGHTS

- 78,985 total square feet
- Entire building available March 2017
- Interstate visibility and accessibility
- Abundant parking – 6/1,000 parking available
- Direct access into the park via 73rd Street off ramp
- Close to amenities at 71st/I-465 & Trader's Point
- Beautiful park-like setting and lake views
- Three story office building
- Built in 1997

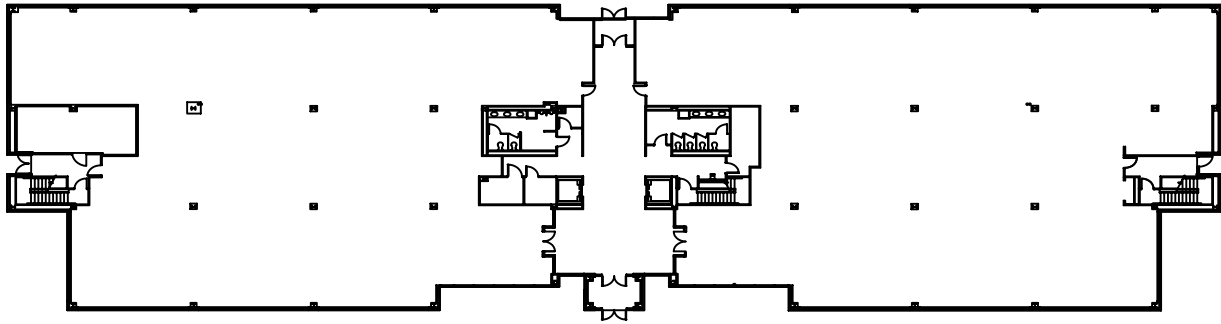


AVAILABILITIES

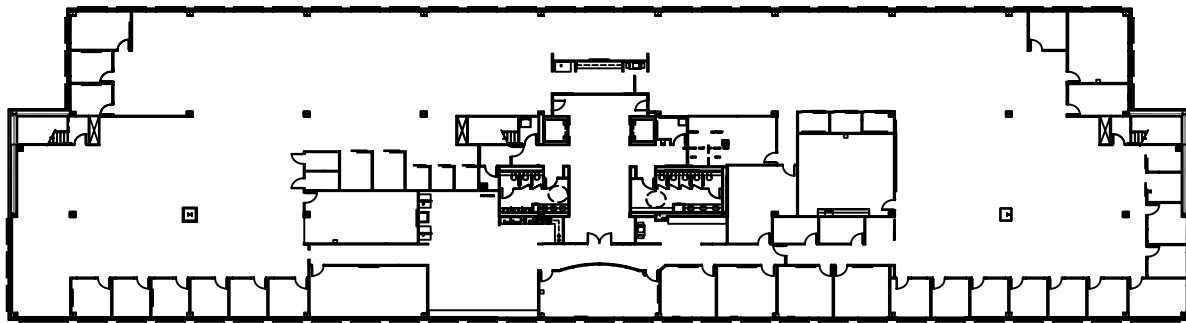
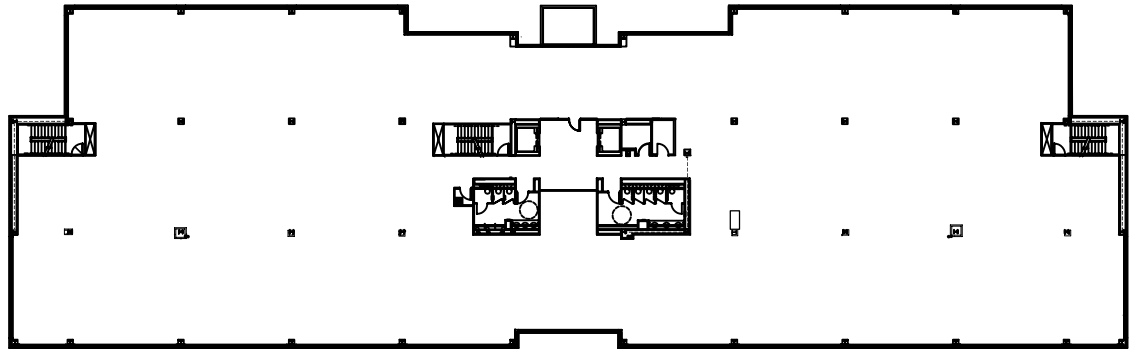
- Suite 100 - 12,700 RSF
- Suite 150 - 12,585 RSF
- Suite 200 - 26,293 RSF
- Suite 300 - 27,407 RSF

Suite 100 - 12,700 RSF

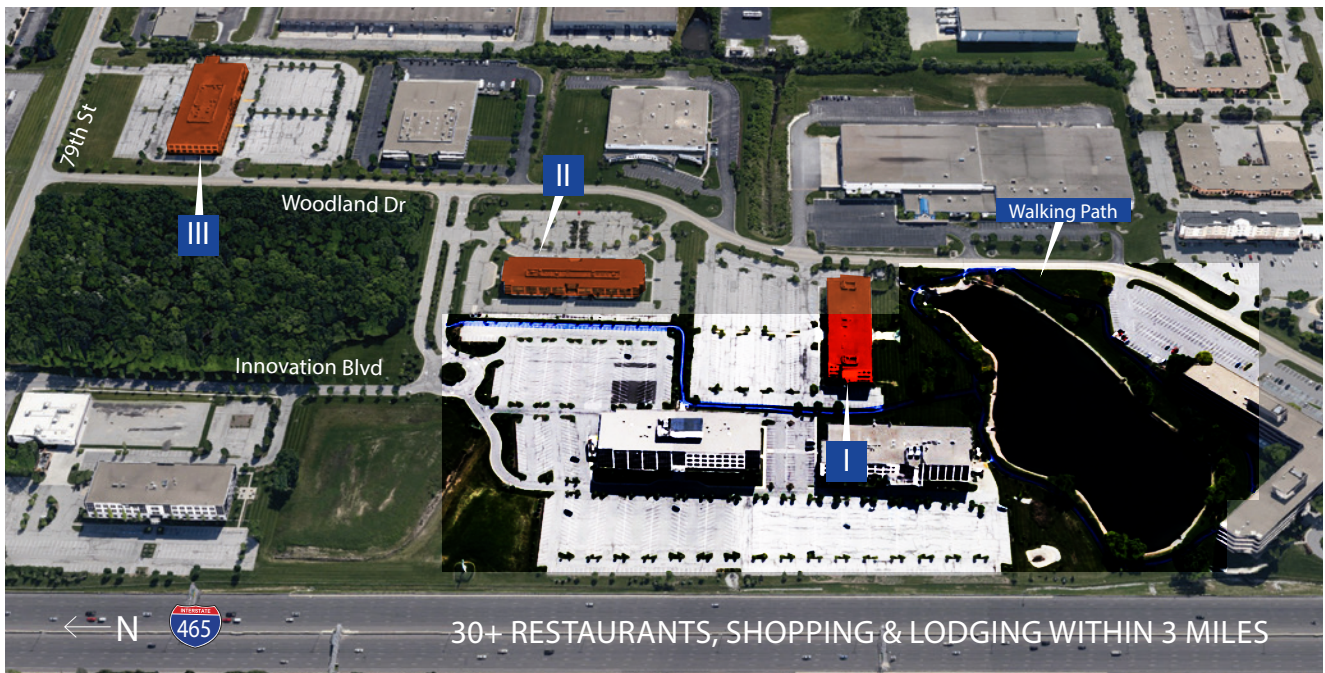
Suite 150 - 12,585 RSF



Suite 200 - 26,293 RSF



Suite 300 - 27,407 RSF



WOODLAND CORPORATE PARK

WCP I, 7602 Woodland Drive • Indianapolis, IN 46278



TRACI KAPSALIS
Senior Vice President
+1 317 810 7013
traci.kapsalis@am.jll.com

TAMMY FAULK
Senior Associate
+1 317 810 7174
tammy.faulk@am.jll.com

