

STRAUSS

REALTY, LTD.

3310 N ELSTON AVENUE
CHICAGO, ILLINOIS 60618

±31,175 SF COMMERCIAL SPACE FOR LEASE

RENDERING



Hot Avondale neighborhood. Double barrel truss, wide open space.

Will replace all mechanicals, electrical, plumbing, windows and more.

Potential uses include: Restaurant, brew pub, tasting room, event space, office, athletic, etc..

- Lease Rate: Subject to offer
- Building: ±31,175 SF
- Divisible to ±7,500 SF
- Land: ±43,745 SF
- Zoning: C1-1
- Taxes 2016: \$48,748.9(\$1.56psf)
- 14' clear to bottom of truss
- 21' clear between trusses
- 1 dock, 1 drive in door
- Heavy Power
- Parking: ±50 spaces
- Ward 33-Alderman Deb Mell

ADAM SCHNEIDERMAN, SIOR

CELL: 847.826.4467 ADAM@STRAUSSREALTY.COM

STRAUSS REALTY, LTD. 4220 W. MONTROSE AVE. CHICAGO, IL 60641 PHONE: 773.736.3600 FAX: 773.736.3601

This flyer was produced using data from private and government sources deemed reliable. The information herein is provided without representation.

STRAUSS

REALTY, LTD.

3310 N ELSTON AVENUE CHICAGO, ILLINOIS 60618



ADAM SCHNEIDERMAN, SIOR

CELL: 847.826.4467 ADAM@STRAUSSREALTY.COM

STRAUSS REALTY, LTD. 4220 W. MONTROSE AVE. CHICAGO, IL 60641 PHONE: 773.736.3600 FAX: 773.736.3601

This flyer was produced using data from private and government sources deemed reliable. The information herein is provided without representation.

STRAUSS

REALTY, LTD.

3310 N ELSTON AVENUE
CHICAGO, ILLINOIS 60618



ADAM SCHNEIDERMAN, SIOR

CELL: 847.826.4467 ADAM@STRAUSSREALTY.COM

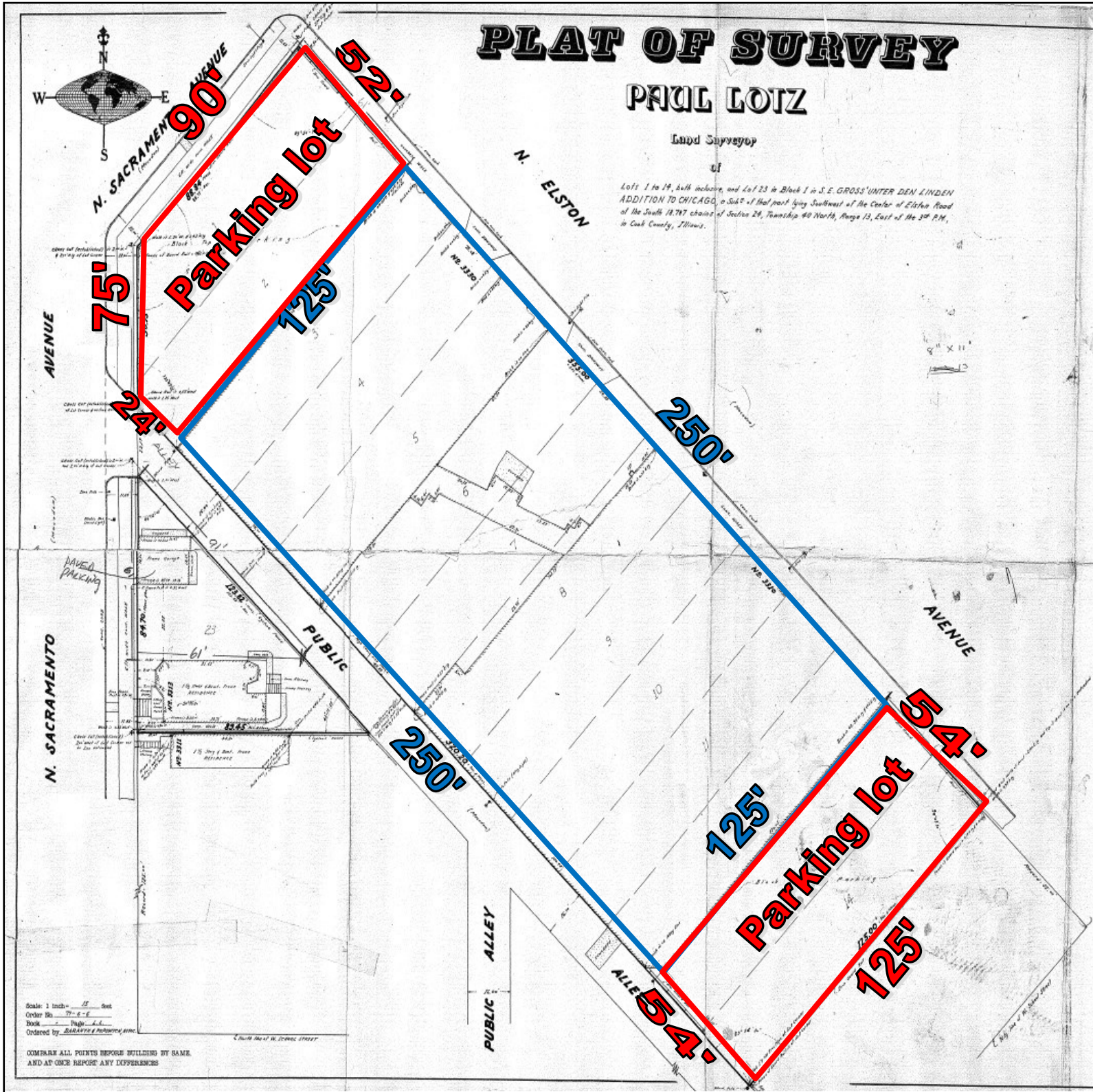
STRAUSS REALTY, LTD. 4220 W. MONTROSE AVE. CHICAGO, IL 60641 PHONE: 773.736.3600 FAX: 773.736.3601

This flyer was produced using data from private and government sources deemed reliable. The information herein is provided without representation.

STRAUSS

REALTY, LTD.

3310 N ELSTON AVENUE
CHICAGO, ILLINOIS 60618



ADAM SCHNEIDERMAN, SIOR

STRAUSS REALTY, LTD. 4220 W. MONTROSE AVE. CHICAGO, IL 60641 PHONE: 773.736.3600 FAX: 773.736.3601

This flyer was produced using data from private and government sources deemed reliable. The information herein is provided without representation.