

PAN AMERICAN PLAZA  
201 SOUTH CAPITOL AVENUE, Indianapolis, IN 46225



201 South Capitol Avenue, Indianapolis, IN 46204



For more information, contact:

**Pete Anderson**  
317.639.0467  
pete.anderson@cassidyurley.com

**Bennett M. Williams**  
317.639.0442  
bennett.williams@cassidyurley.com

One American Square, Suite 1300  
Indianapolis, Indiana 46282  
Telephone 317.634.6363  
Telefax 317.639.0504  
www.cassidyurley.com

Located in the heart of downtown Indianapolis

- On-site ownership and management
- On-site conference facility, fitness facility with showers and locker room, café, and security
- Connected parking garage
- Up to 12,320 SF Available
- One block from Lucas Oil Stadium and Circle Center Mall
- Across the street from Union Station and the Convention Center



For more information, contact:

**Pete Anderson**  
317.639.0467  
pete.anderson@cassidyurley.com

**Bennett M. Williams**  
317.639.0442  
bennett.williams@cassidyurley.com

www.cassidyurley.com



The information contained herein was obtained from sources we consider reliable. We cannot be responsible, however, for errors, omissions, prior sales, withdrawal from the market or change in price. Seller and broker make no representation as to the environmental condition of the property and recommend purchaser's independent investigation.



**General Specifications:**

138,800 Square Feet

12 Stories

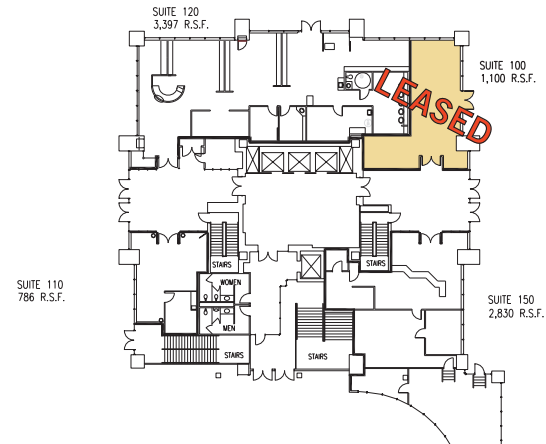
Suites available from  
716 - 24,640SF

Connected to adjacent parking  
garage

Building conference room  
and fitness facility located on  
the 2nd floor

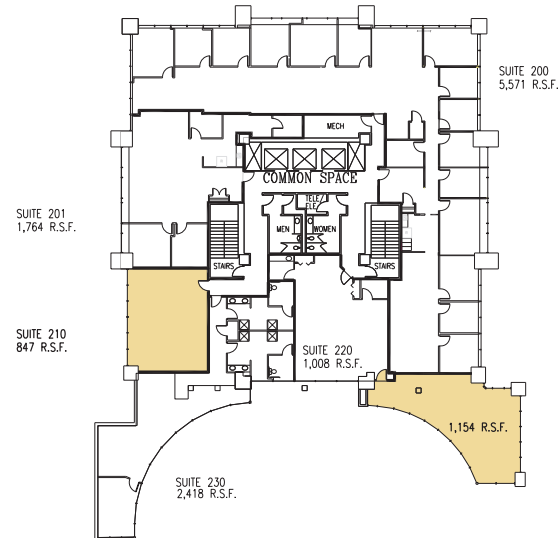
Full service café on the 1st floor

Full service salon on the 1st floor



Suite 210 / 240

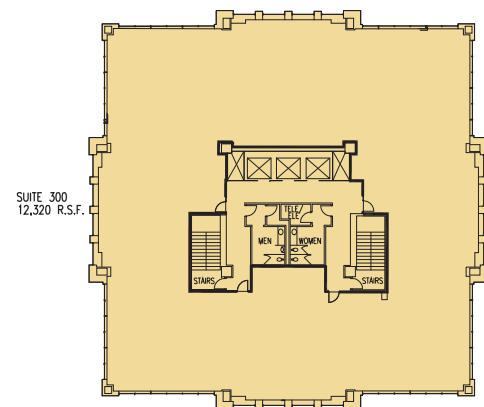
847 SF / 1,154 SF



Suite 300

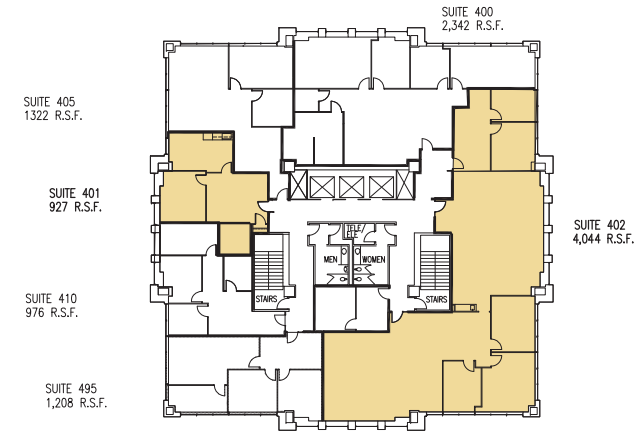
**Large Blocks Available!**

up to 12,320 SF



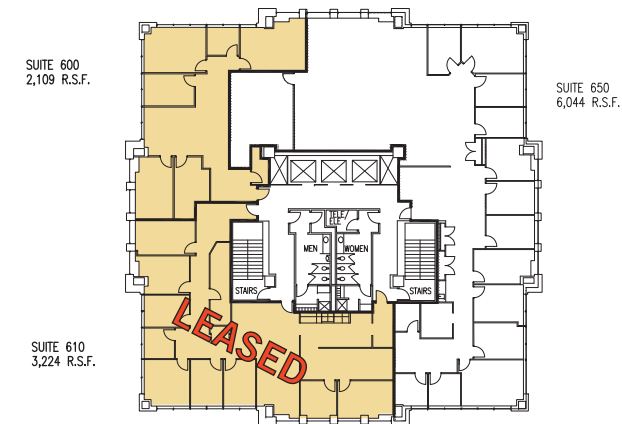
Suite 401 / 402

927 SF / 4,044 SF



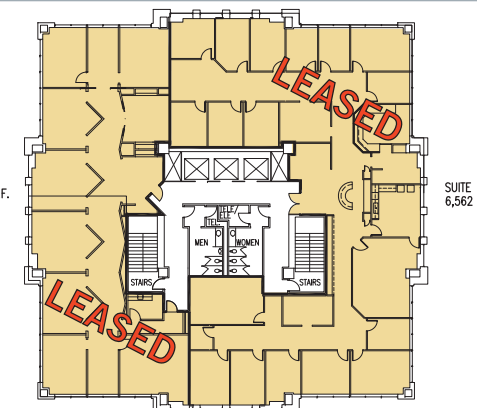
Suite 600

2,109 SF



Suite 710

Suite 700



AVAILABLE SPACE	
Suite #	Square Feet
210	847 SF
240	1,154 SF
300	12,320 SF
401	927 SF
402	4,044 SF
600	2,109 SF